



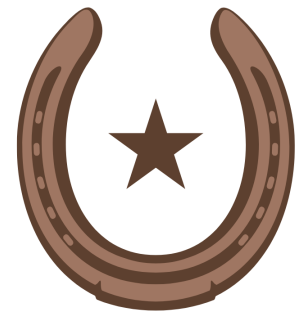
FELLOWSHIP SQUARE
PHOENIX

2002 W Sunnyside Ave | Phoenix, AZ 85029
www.FellowshipSquarePhoenix.org
602-443-5427



It's November! The weather is starting to cool down and thankfulness is in the air. This month come share your gratitude on our Thankful Tree because as Walt Whitman once said, "To feel gratitude and not express it, is like wrapping a present and not giving it".

Grab your cowboy and cowgirl hats and boots! We have a Wild West of a time planned for you this month. We aren't just staying home on the range! We have some Wester Wanderings to McCormick-Stillman Railroad Park, Goldfield Ghost Town, the Heard Museum, and Sedona! We even have a Hoedown!



NOVEMBER
2024

★WESTERN★
WANDERINGS!



YEEHAW! 
WELCOME!



Inge P.



Wanda O.



Cynthia S.

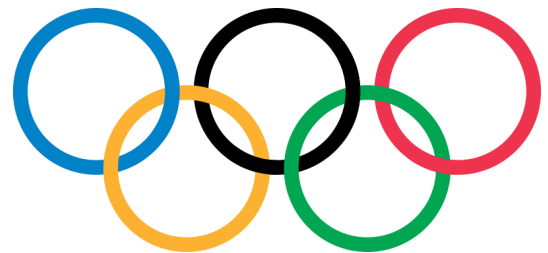


Marilyn & Larry B.



CHRISTIAN CARE
FELLOWSHIP SQUARE

Customer Service
Employee Olympics



Employee Olympics is a staff recognition program in which you nominate an employee for providing outstanding customer service.

Olympic Medal Winners are announced quarterly and receive medals, monetary incentives as well as a special appreciation breakfast. Pickup a nomination form at the concierge desk.

Be sure to give specific examples or reasons for nomination.



FELLOWSHIP
SQUARE
PHOENIX

with
**Heartfelt
Sympathy**



Lorene L.

*Be strong and
courageous. Do not
be afraid; do not be
discouraged, for the
LORD your God will
be with you
wherever you go.*

-Joshua 1:9

Rain or shine, Curana
Health is there for you.
No need to leave
the comfort of your
community.

Meet the Curana Health team!



Dr. Cody
Guggenmos



Stephanie
Martinez, DNP



Brinda
Patel, NP



Jennifer Swinney,
Medical Assistant

Call to schedule an appointment **602-613-5917**

Vet-to-Vet Cafe



Thursday, November 21st at 10:00AM in the Activity Room

Music & Melodies



Tuesdays in November at 10:00AM in the Dining Room

Ice Cream Social



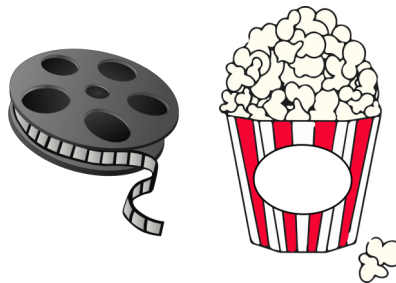
Fridays, November 1st and 15th at 3:00PM in the Garden Cafe

Happy Hour



Friday, November 8th at 3:00PM in the Library

Cinema Saturday



November 2nd, 16th, and 30th at 1:30PM in the Activity Room

Thanksgiving Craft



Friday, November 22nd at 10:00 AM in the Activity Room

Scenes & Sarsaparilla with Sarah



Wednesday, November 27th at 12:30PM in the Activity Room

Winedown Wednesday



Wednesday, November 27th at 2:30PM in the Library

McCormick-Stillman Railroad Park



Saturday, November 2nd 12:00PM (Sign Up)

Goldfield
Ghost Town



Saturday, November 9th
12:00PM (Sign Up)

Heard Museum



Monday, November
18th 9:30AM
(Sign Up)

Boynton
Canyon Tour



Monday, November 25th
7:00AM (Sign Up)



HAPPY HOUR
HOEDOWN



YEEHAW! It's a Happy Hour Hoedown!
Saddle up for drinks, tasty bites, toe-tapping line dancing, and a few fun games. There's a little bit of hoedown happiness for everyone!

WHEN: Friday, November 22nd at 2:00pm

WHERE: The Activity Room

Rain or shine, Curana Health is there for you.
No need to leave the comfort of your community.



Clinic hours:
Monday & Wednesday
8:30 a.m. - 4 p.m.
602-613-5917



CALLING ALL VOLUNTEERS!

We are looking for dedicated individuals to join us in our mission to make a positive impact here at Fellowship Square.

Mission Statement

Through Christian love and excellence, we are dedicated to providing a fulfilling lifestyle and promoting independence to those we serve.

See Amy or Rebecca at the Front Desk Lobby to learn more about exciting volunteer opportunities!



THANKSGIVING:

Thanksgiving is such a great idea that God did not wait around for humans to invent it; but taught us to be thankful from the start of creation. Adam, Eve, Cain, Able, and all the children born to Adam and Eve were taught by God to be thankful and bring offerings of thanksgiving.

Thanksgiving has a wonderful way of softening our feelings, drawing us closer to God, and allowing us to truly enjoy the special relationships we have in this world. It takes the focus off of us and what we have accumulated and puts the focus on what God and others have helped us accomplish.

Thanksgiving allows us to put pride and achievements in perspective and teaches us that we are all part of a grand plan called life and not some individual being who just accomplished a lot on their own. We are a product of heritage shaped by our genetics; our families; our mentors; our teachers; our nation; our God; our Savior Jesus; our training; and millions of other influences that make us the person we are.

Thanksgiving is more than a feeling; it is the genuine desire to appreciate and praise all that has been done for you. I know we have a few self-made people who will say, "No one ever gave me anything, I had to work hard for all I got." Well, all I can say is good luck if you really give everything back-that was given to you!" Thanksgiving; the trait that makes your life extraordinary.

God Bless You, Chaplain Tom



Staff Directory

Activity & Event Coordinator	Sarah Garcia	602-443-5421
Activities Assistant	Katy Freitas	602-424-9426
Beauty Barber Shop	Sue Widdison	602-443-5422
Business Director/HR	Jennifer Sheppard	602-424-9427
Chaplain	Dr. Tom Haney	602-443-5486
Concierge Desk	Volunteers	480-385-0266
Dining Room Meals	Take Out Orders	602-443-5424
Dining Room Supervisor	Esperanza Alcantar	602-443-5468
Director of Resident Experience	Amy Borders	602-443-5419
Housekeeping Services	Quatasha Warren	602-443-5420
Executive Chef	Miguel Valdez	602-443-5425
Executive Director	Kristie Larsen	602-443-5439
Director of Operations	Susan O'Connell	480-385-0065
Front Desk	Tierra/Yesenia	602-443-5427
Home Health	Office Manager	602-443-5447
Resident Navigator	Rebecca Uhl	480-385-0267
Supportive Services	Peggy McIntyre	480-254-7941
Social Services Coordinator	Jamie Childress	602-443-5417
Security	Customer Service	602-443-5400
Wellness/Fitness Center	Ben Evans	602-443-5484
Transportation	Tony Lopez	602-424-9443
Work Orders	Maintenance Work Orders	602-424-9432
Work Order Email	phxworkorder@christiancare.org	



EMPLOYEE APPRECIATION
CHRISTMAS FUND

The Employee Appreciation Christmas Fund accepts donations from residents throughout the year to be distributed to eligible staff before the holidays. Your gift to this Fund is a tangible way of showing the staff how much you value all they do.

An easy way to contribute without the worry, is to have an automatic gift added to your rent each month. This allows you to budget for your tax deductible gift each year.

Forms are available at the front desk or with your billing specialist.

If you have any questions please contact:
Fellowship Square Office of Advancement 480-822-7373